



**EXECUTIVE SUMMARY**

Methos is a leader in maintenance management software for the IBM System i5 (AS/400) platform...with installations world wide in a diverse range of industries. Methos offers the most flexible and easy-to-adapt system in the industry, backed by unequalled service and support before, during and long after each sale!

**Key Features at a Glance**

- Comprehensive System
- Bar-coding
- RF Capability
- Document Linking
- Client/Server, Thin Client, Browser
- Easy to Learn
- Unique Data/Screens Elements Tailored to Your Environment
- Context Sensitive Help
- Multi-Lingual Capable

**Complete Enterprise Solution**

**BENEFITS FOR THE PLANT, OPERATION, MANUFACTURING, OR MAINTENANCE MANAGER**

Methos allows you to view detailed or summary information on all maintenance activities, asset/equipment history, personnel history, storeroom activities, and purchasing details. It provides you with cost summaries by work orders and tasks, projects, material and labor resources, department or divisions and all equipment hierarchy.

**BENEFITS FOR THE MAINTENANCE SUPERVISOR**

Methos enables you to Review and Approve Work Documents and Schedules, Track Work In Progress, Reassign Priorities & Resources as needed, Analyze Problem Areas and Make Improvements as Required.

**BENEFITS FOR MAINTENANCE PLANNERS AND SCHEDULERS**

Methos permits you to review work backlog and preventive maintenance schedules, create work plans including material and labor estimates, assign personnel and materials to the job and create work schedules.

**BENEFITS FOR MAINTENANCE TECHNICIANS AND TRADESMEN**

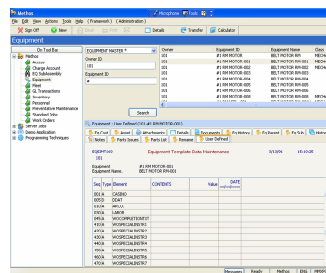
Methos allows you to initiate work requests, record work performed and indicates parts used on equipment. It enables you to review current inventory levels, equipment specifications drawings, cross-references, and past history of equipment repairs.

**BENEFITS FOR INVENTORY AND STORES PERSONNEL**

Methos enables you to monitor plant inventory, transfer material, issue and return parts and create purchase requests to maintain adequate storeroom levels. Minimum/Maximum to auto generates purchase requisitions.

**BENEFITS FOR PURCHASING PERSONNEL**

The Methos/ Enterprise Resource Planning (ERP) integration allows you to review and consolidate purchase requests into purchase orders and track vendor performance.



**METHOS is the Solution for your organization right now.**

- Reduces Expenses
- Integrates with Financials
- Reduces Expenses
- Relieves Stress

In the global economy, no company can prosper with inadequate quality and inflated costs. Maintenance related costs can average some 30% of a typical company's total operating costs. Methos has been a leading supplier of computerized maintenance management solutions (CMMS) for nearly 15 years.

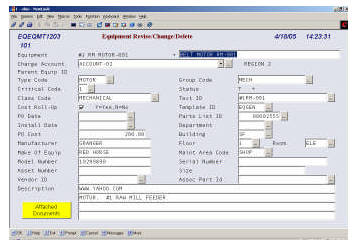
Other CMMS systems require double keying of maintenance and purchasing transactions or involve the review of separate reporting systems to understand the impact of maintenance activities and costs. Because Methos is bi-directionally integrated with your System i5 (AS/400) financials you'll gain an unprecedented ability to understand and control your maintenance expenditures.

Methos provides users with detailed maintenance cost analysis at nearly any level of detail including maintenance costs by machine, by parts type, by supplier, as well as, by labor category and personnel. And because this information is bi-directionally fed between Methos and your System i5 financials, you'll have your finger on the pulse of your maintenance costs at all times.

*Methos is Integrated with these financial modules from JD Edwards, HarrisData, SSA GT-Infinium, and other leading System i5 ERP packages.*

- General Ledger
- Purchasing
- Accounts Payable
- Project Accounting

**COMPREHENSIVE AND AN ENTERPRISE SOLUTION**



**METHOS™ MODULES**

**Equipment Module** defines any area, process or asset against which maintenance repair cost and history is accumulated.

- A database of equipment specifications, repair cost accumulation, and asset value.
- Access to a history file containing all work orders performed against equipment.
- Association of multiple equipment to a single location.
- Relocation history file shows movement of equipment components between locations.
- Unlimited Parent / Child relationships for cost monitoring and scheduling.
- Ability to attach images.

**Work Order Module**

This is the work horse of the Methos™ product. Users can request work to be performed, maintenance can estimate, plan, schedule manpower, order parts, complete, or cancel work requests. Automatic statuses and emailing keep everyone in informed of progress.

- Entry of work orders with minimum input.
- Spending approval limits to ensure that a proper review is made prior to work order initiation and approval.
- Bar Code Capability
- Time Entry within work order
- Estimates versus Actual
- Job Modeling
- Project Tracking
- Detail History
- Reserving Parts
- Daily, Weekly, or any scheduling

**Preventative Maintenance**

The (PM) controls a library of standard jobs or tasks. A task, as defined in Methos™, is a pre-determined set of job procedures to be performed on demand or on a known frequency.

- Ability of triggering PM tasks by calendar date, meter (duty cycle) reading, or on demand.
- A means of identifying the tasks that are overdue for tasking (work order creation).
- PMs create bills of material that will automatically reserve parts upon tasking.
- Automatic sourcing of all due calendar and duty cycle tasks into work orders.
- Reports to forecast of PM labor and materials requirements for up to a year (365 days), or any 'window of time' within that year.
- PMs can be used for plant shut down orders.

**Inventory/Storeroom**

The Storeroom system is highly integrated with all other modules within Methos™. The Inventory system must exist for accurate material estimation during work

order and preventive maintenance planning, material usage analysis, stock level management, and efficient and timely reordering to take place.

- Creation of a parts master files or part catalog with general part information, i.e., manufacturer, description, etc.
- Multiple Central and Satellite storerooms which maintain part status, physical location, reorder requirements, historical data, vendors, etc.
- Creation of equipment to part cross-references.
- Dock receipt and verified receipt of ordered materials.
- Physical inventory (cycle count/count list process) of storeroom materials.
- Access and maintenance of planned material requirements and reservations through Material Requests.
- Material Request issues, window issues, and returns.
- A History file of all inventory transactions that involved part quantity and/or value.

**Other Modules Included**

- **Charge Account**
- **Personnel**
- **Fleet**
- **Security**
- **Integration Control**
- **Purchasing**
- **Standard Jobs**

**A COMPLETE SOLUTION**

Getting the most from your software investment Rippe & Kingston provides high-quality software services that address all aspects of your software application life-cycle needs.

**Profile**

Over 100 Certified Professionals  
 IBM Premier Business Partner  
 LANSa Platinum Partner  
 Microsoft Business Partner  
 Clients in 42 States & 7 Countries

**Services**

Development  
 Project Management  
 Infrastructure  
 Mentoring/Education  
 Virtual CIO  
 Hosting

**Rippe & Kingston Systems, Inc.**

1077 Celestial St.  
 Cincinnati, Ohio 45202-1696  
 Phone: 513/241-1375  
 www.rippe.com  
 Offices: Cincinnati, Atlanta & Montreal