



EXECUTIVE SUMMARY

Designed specifically for small to medium size businesses, **e.ssentiaTM** combines a rich, declarative environment for creating a portal Web interface, publishing and managing information, accessing dynamic data, and customizing the portal experience, as well as an extensible framework for application access. Using e.ssentia, businesses have the power to connect employees, partners, and suppliers with the information they need and the flexibility to create views tailored to each community.

Key Features at a Glance
Up and Running Quickly
Page Creation and Management
Rich Portlet Development
User Productivity
Portlet to Portlet Communication
Single Sign-On
Access Relevant Applications
Integration of Content
Integration of Applications
Easy Administration and Management
Numerous Supported Environments
Complete Solution

GET A PORTAL UP AND RUNNING QUICKLY

One expectation of portal solutions is that they yield significant short-term return on investment, by providing measurable utility to the targeted audience or community. With e.ssentia, a very high percentage of the components that make up a typical portal can be built using the easy to use Portlet Generator. The creation of pages and templates and the uploading of content can be accomplished with just a few mouse clicks.

SIMPLIFYING PAGE CREATION AND MANAGEMENT

Page design and development features within E.ssentia Portal give administrators, page designers, and end users a powerful environment in which to create content rich, secure, portal pages - no programming is required!

RICH PORTLET DEVELOPMENT ENVIRONMENT

In addition to the **Hundreds of Pre-Built Portlets** provided, e.ssentia includes a **Portlet Generator** that makes it easy for administrators to expose enterprise data, applications and content both internal and external to the organization.

Portlet Generators

- 5250 Emulation (iSeries)
- Data Base Browser- Includes Download to Excel
- Discussion Forums
- Document Repository
- E-mail
- External News Feed (RSS)
- New File Sharing (IFS & Windows Network Drives)**
- Free Form Portlet – WYSIWYG & Word/Excel Paste
- IFrame-any Web Site
- External Application Access with Secured Single Sign-on
- Internal News-create your own
- LANSA Based Portlets (Frameworks, WAMS, etc.)
- New LANSA Portlet Generator 2006 with Wizards (Templates)**
- Web Services (SOA)
- Domino (QuickPlace)

IMPROVE USER PRODUCTIVITY

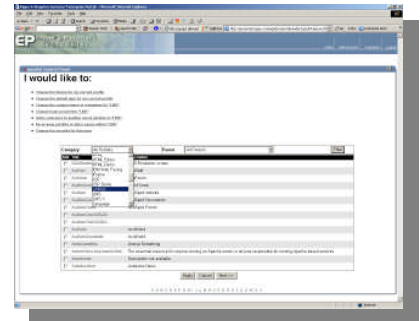
Portals are also about providing the applications tools and services needed by individual end users to enable them to be more productive in the execution of their tasks. This support includes to only how they interact with the data and information presented to them, but also the content that they author and publish for use by the portal community.

ACCESSING RELEVANT APPLICATIONS WITH SINGLE SIGN-ON

Single Sign-On means that a user only has to log into their environment once, and the portal infrastructure handles passing the user's credentials to all required systems. This feature provides **Ease of Use, Increased Security and Ease of Administration.**

INTEGRATE CONTENT AND APPLICATIONS

Portals are designed to provide access to a multitude of electronic resources, which include the complete range of information and services available to an organization.



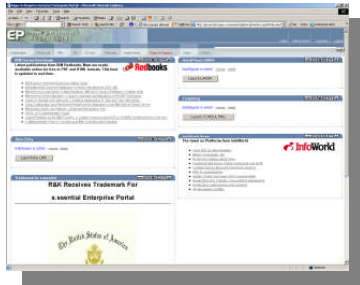
SIMPLIFY ADMINISTRATION AND MANAGEMENT

e.ssentia Portal management features make it easy for a single administrator or a group of administrators, each with specific responsibilities, to maintain and manage a portal instance. Administrative controls are configurable, allowing administrators to implement appropriate policies and standards for the portal user interface, information taxonomy, content attribution, user and group management, and so on.

e.sential™ Enterprise Portal 2007

MANAGING AND SHARING CONTENT WITH BUILT-IN CONTENT MANAGEMENT

Browser-based wizards and integrated editing dialog boxes make it easy for page designers to publish and manage the content that appears on their pages. Business level users can also use this publishing environment to easily define collaborative work areas and to publish their business documents.



ECONOMICAL SOLUTION

In addition to providing a very economical as well as complete portal; e.sential allows you to implement the solution without the requirement for expensive platform expansions, databases, web servers, and other third party products.

Typical Configuration:

Windows Server with Apache Tomcat using MySQL database.

BUSINESS BENEFITS

Increase Productivity (Give users personalized access to information, tools and business processes. Promote communication and collaboration.)

Reduce IT Costs (Consolidate multiple sites, accelerate time-to-market, and empower non-technical users to manage publishing and collaboration areas. Leverage existing technology investment.)

Reduce Support Costs (Enable web-based self-service for customers. Transition partners and suppliers to lower-cost web self-service.)

Increase Customer Loyalty and User Satisfaction (Create community sites and deliver content based on user profile. Simplify the visitor's experience with personalized navigation and content presentation. Speak with one consistent voice to customers.)

Develop Profitable Business Relationships (Target the most relevant content to users. Allow users to configure their own portal pages in order to make it as easy as possible to do business with you.)

Reduce Communication Costs (Consolidate multiple web sites and portal projects. Deploy an integrated solution that includes a portal, personalization, content management, application integration. Automate processes and expose tasks and functions in a self-service model through the web.)

Build Communities (Promote site benefits and community membership with clear, easy site navigation; personalized content delivery, targeted newsletters and alerts; and end-user control over presentation and preferences.)

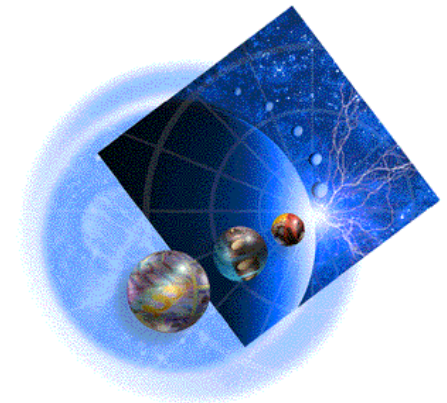
A COMPLETE SOLUTION

Getting the most from your software investment Rippe & Kingston provides high-quality software services that address all aspects of your software application life-cycle needs.

A collaborative Portal is provided for each client as an additional mechanism for communication, project management and convenience.

With R&K, you have access to standards-based, modular, multi-platform software coupled with best-in-class services and support.

The wide range of R&K services offerings---from online self-solve support to proactive mission-critical services---enable you to choose the services that best match your needs.



Profile

Over 100 Certified Professionals
 IBM Premier Business Partner
 LANSAT Platinum Partner
 Microsoft Business Partner
 Clients in 42 States & 7 Countries

Services

Development
 Project Management
 Infrastructure
 Mentoring/Education
 Virtual CIO
 Hosting

Rippe & Kingston Systems, Inc.

1077 Celestial St.
 Cincinnati, Ohio 45202-1696
 Phone: 513/241-1375
 www.rippe.com
 Offices: Cincinnati, Atlanta & Montreal