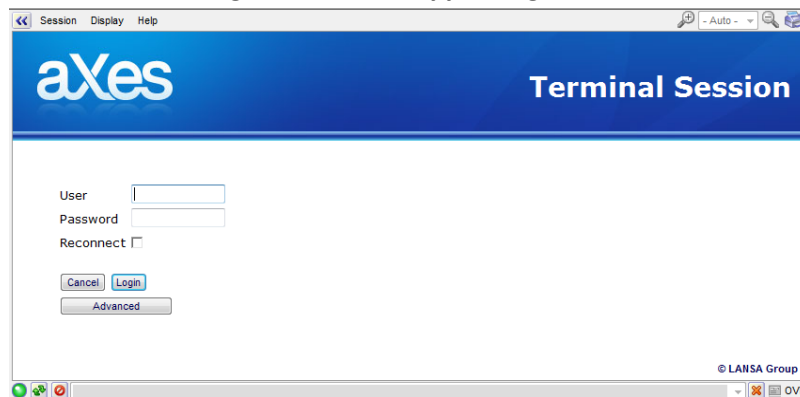


## How to Customize aXes Log On Screens

This short technical paper will provide an overview of how to use aXes from [LANSA](#) to modify the standard login screen. Before we get started, let us give you a quick overview of aXes. Basically, aXes transforms Legacy Green Screen applications (e.g. RPG , COBOL, etc.) 5250 programs into Rich Internet Applications accessible via multiple Web Browsers on multiple devices (including mobiles) — without having to change a single line of code. You don't have to leave RPG or COBOL for your 5250 green screen applications to automatically become modern Web browser-based applications. In fact, this works with anything including CL, your old LANSAs green screen code, etc. on the [IBM System i](#). You write the business logic and layout the screen. aXes does the rest by turning your 5250 data stream into a modern, rich Internet user interface. [Learn more.](#)

When you first use aXes with your 5250 applications, the following screen is generated automatically. It is a good starting point for all installations; however, it is not tailored to your organization. We will illustrate the adjustments necessary to customize the login.

### ***Starting Point – The Shipped Log On Screen***



Below is a revised login screen after we made some adjustments to the supplied HTML that aXes generated. Since aXes is using HTML and style sheets, the screen can be adjusted to fit most visual requirements a company may dictate. In our example, we made four HTML and one style sheet adjustment.

### ***Result - Customized Log On Screen***

## How to Customize aXes Log On Screens



Visually this example is not pretty - but structurally it has the classic elements that customers often desire – a company tailored login screen that includes an image at the top, a title/header area, and some additional details displayed as a footer. For the best visual results, we recommend that you consult with a professional graphic designer. These are the steps required to make the modifications.

### Summary of Steps

1. Duplicate the shipped Logon Screen to make your own version
2. Setup a desktop shortcut to test your new Logon Screen
3. Have a quick look at the structure of MyTest\_Logon.XML
4. Remove the shipped images
5. Add in your own styles and images
6. Add in your own header
7. Change the background color
8. Add in your own footer

When these steps are completed you are finished. **The same 8 steps are listed below in detail** with code examples of what was modified to produce a modified sign on screen. If you have any questions, please [request information](#) or call us at 513.977.4544.

Author Robert Sweney is a Senior Consultant with [Rippe & Kingston Systems, Inc.](#)

## How to Customize aXes Log On Screens

### **1. Copy the Shipped Logon Screen to Make your own Version**

In the aXes ts/skins folder locate file axes\_logon.xml.

Copy it to produce a custom login file named **MyTest\_login.xml** (say) in the same folder.

Using the OS/400 WRKLNK command check that user \*PUBLIC has \*R rights only to the new file MyTest\_login.xml.

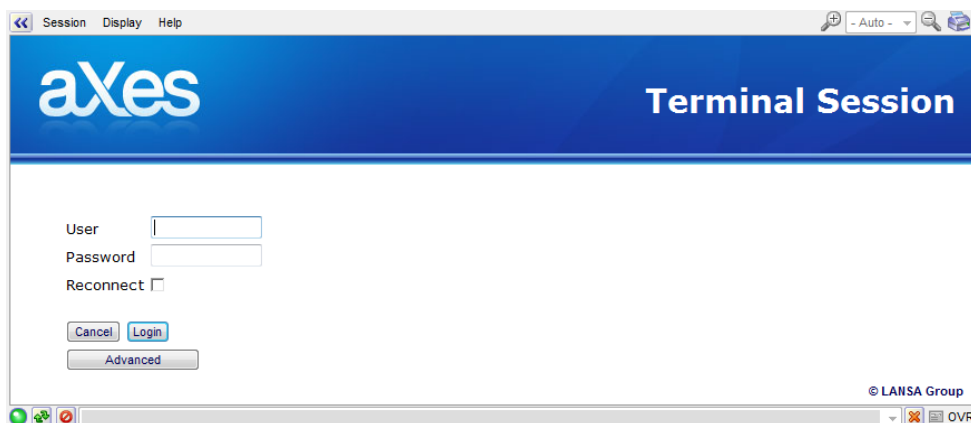
### **2. Set Up a Desktop Short Cut to Test Your Custom Sign On Screen**

Set up a desktop short cut to test your custom logon. The URL it uses should be like this:

[http://<aXesHost>:<aXesPort>/ts/skins/ts\\_basic.html?login=/ts/skins/mytest\\_login.xml](http://<aXesHost>:<aXesPort>/ts/skins/ts_basic.html?login=/ts/skins/mytest_login.xml)

This will start an aXes basic terminal session using your custom log in screen instead of the standard shipped one.

Test your desktop shortcut. The result should look like this (ie: exactly like this shipped log on):



### **3. Have a quick look at the structure of MyTest\_Logon.XML**

Open your MyTest\_Logon.XML document with a source editor, like NOTEPAD:

Structurally it is an XML document that is transformed to create a HTML page.

The HTML page is very simple, consisting of:

- A set of styles – defined immediately after this line:

```
<style type="text/css">
```

- Some simple JavaScript – defined immediately after these lines:

```
<script>
function advancedLogin ()
```

## How to Customize aXes Log On Screens

- A simple web form – defined immediately after this line:

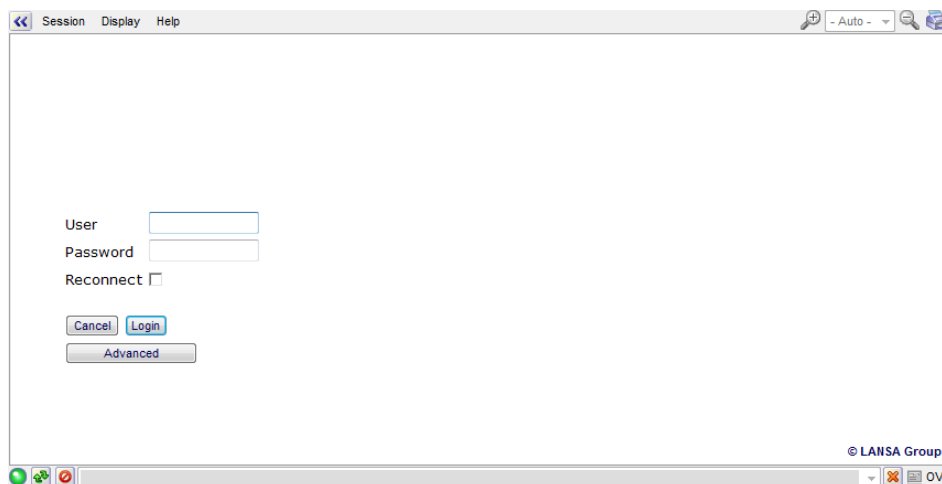
```
<div id="loginMainDIV" style="width:100%;height:100%;background: white;">
```

### 4. Remove the Shipped Images

The first thing to do is strip out the images used in the shipped header, by **removing** these lines:

```
<div style="position:absolute; width:100%; top:0; left:0; height:115px; background:
white url(/ts/skins/images/axnewheaderbg.jpg) repeat-x left top;">
</div>
<div style="position:absolute; top:0; left:0; height:115px; background: transparent
url(/ts/skins/images/axnewheader.jpg) no-repeat left top;">
<table style="width:100%; height:115px;">
<tr>
<td style="width:100%;"></td>
<td ax_txtscope="core" ax_txt="Terminal Session" nowrap="true" style="padding-
right:15px;" id="newLogoTitle">Terminal Session</td></tr>
</table>
</div>
```

Save your changes and use your desktop short cut. The result should be like this:



### 5. Add in your own Styles

Set up some styles to define the various parts of your custom logon, by inserting these new style elements just **before** the </style> tag:

```
#custom_LoginHeader
{
top : 0;
left: 0;
width: 100% ;
position: absolute;
text-align: center;
color: #ff8700;
font-size: 28pt ;
font-weight: bold ;
font-family:verdana;
}

#custom_LoginFooter
{
top : 340;
left: 0;
```

## How to Customize aXes Log On Screens

```
width: 100% ;
position: absolute;
text-align: center;
color: white;
font-size: 10pt ;
font-weight: normal;
font-family:verdana;
}
```

Save your changes and use your desktop short cut to check that your custom logon still works okay.

### 6. Add in your own Header Area

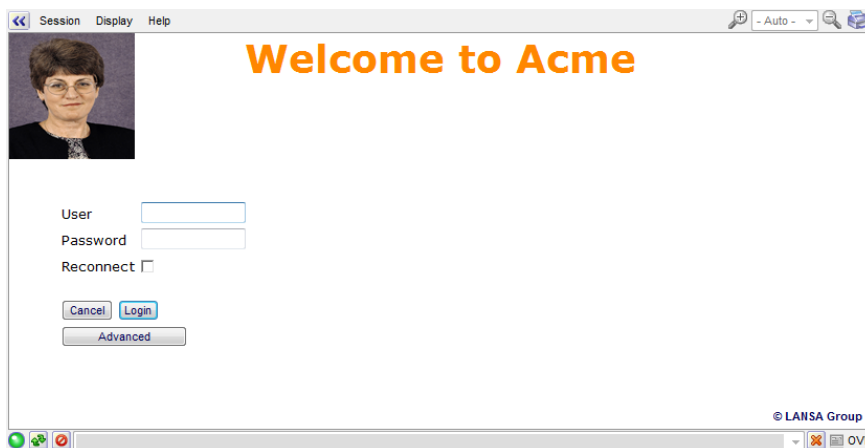
Immediately **after** this tag:

```
<div id="loginMainDIV" style="width:100%;height:100%;background: white;">
```

Insert these new lines to insert your custom header area:

```
<div id="custom_LoginHeader">
  </img>
  <span>Welcome to Acme</span>
</div>
```

Save your changes and use your desktop short cut. The result should be like this:



### 7. Change the Background Color

Now change this line:

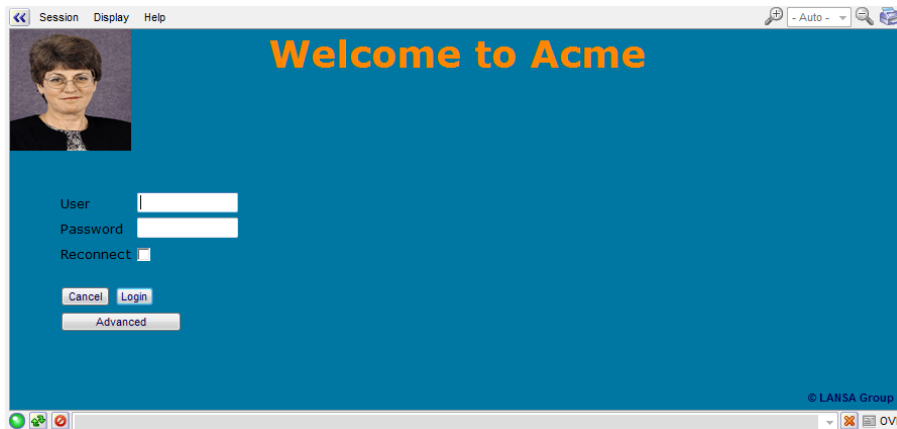
```
<div id="loginMainDIV" style="width:100%;height:100%;background: white;">
```

To This:

```
<div id="loginMainDIV" style="width:100%;height:100%;background: #0076a3;">
```

Save your changes and use your desktop short cut. The result should be like this:

# How to Customize aXes Log On Screens



## 8. Add in your own Footer Area

Immediately *before* this tag:

```
<div id="bylansa">&#169; LANSA Group</div>
```

Insert these new lines to insert your custom footer area:

```
<div id="custom_LoginFooter">
  <div>At ACME we attempt to acheive the best for our customers.</div>
  <div>We do this by dilligenence, hard work and attention to detail.</div>
  <div>Just ask our customers!</div>
</div>
```

Save your changes and use your desktop short cut. The result should be like this:



## **How to Customize aXes Log On Screens**

### ***Now do whatever you like***

This example should give you enough basic information to create what ever look you desire in your own custom logon screen. All you have to do is make sure to test your changes. For the best visual results, we strongly recommend that you consult with a professional graphic designer.

### ***Don't Forget to Back Up your Work***

Remember to back up your custom logon XML document.